

FOR SALE

Residential Development Land
South of Clinton between Fowler & Armstrong
+/- 81 Acres

SITE 

CUSD Elementary School Under Construction (2016 Start)



Derek Feramisco
derek@rccommercial.net
CaBRE#01427540

740 W. Alluvial Suite 102 | Fresno, CA 93711 | 559.448.1500

All projections, opinions, assumptions or estimates are supplied for example only, may not represent current or future performance of the property. Any and information pertaining to the location, demographics and the site plan is supplied by sources believed to be reliable. We do not guarantee the accuracy of information and make no warranty or representation thereto. All information is presented here with the possibility of errors, omissions, change of price, rental or other conditions, prior sale, lease or financing, or withdrawal without notice.

CONFIDENTIALITY AGREEMENT

The information contained in the following offering memorandum is proprietary and strictly confidential. It is intended to be reviewed only by the party receiving it from RC Commercial and it should not be made available to any other person or entity without the written consent of RC Commercial. By taking possession of and reviewing the information contained herein the recipient agrees to hold and treat all such information in the strictest confidence. The recipient further agrees that recipient will not photocopy or duplicate any part of the offering memorandum. If you have no interest in the subject property at this time, please return this offering memorandum to RC Commercial. This offering memorandum has been prepared to provide summary, unverified financial and physical information to prospective purchasers, and to establish only a preliminary level of interest in the subject property. The information contained herein is not a substitute for a thorough due diligence investigation. RC Commercial has not made any investigation, and makes no warranty or representation with respect to the income or expenses for the subject property, the future projected financial performance of the property, the size and square footage of the property and improvements, the presence or absence of contaminating substances, PCBs or asbestos, the compliance with local, state and federal regulations, the physical condition of the improvements thereon, or the financial condition or business prospects of any tenant, or any tenant's plans or intentions to continue its occupancy of the subject property. The information contained in this offering memorandum has been obtained from sources we believe to be reliable; however, RC Commercial has not verified, and will not verify, any of the information contained herein, nor has RC Commercial conducted any investigation regarding these matters and makes no warranty or representation whatsoever regarding the accuracy or completeness of the information provided. All potential buyers must take appropriate measures to verify all of the information set forth herein. Prospective buyers shall be responsible for their costs and expenses of investigating the subject property.

ALL PROPERTY SHOWINGS ARE BY APPOINTMENT ONLY. PLEASE CONTACT DEREK FERAMISCO FOR MORE DETAILS.



Derek Feramisco
derek@rccommercial.net
CaIBRE#01427540

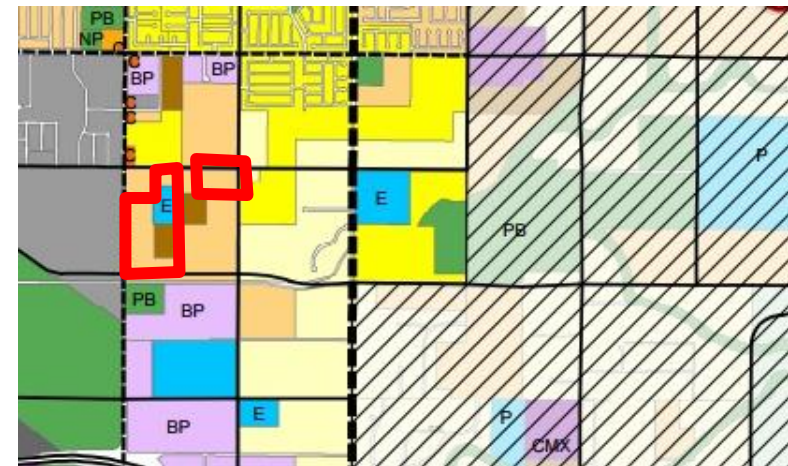
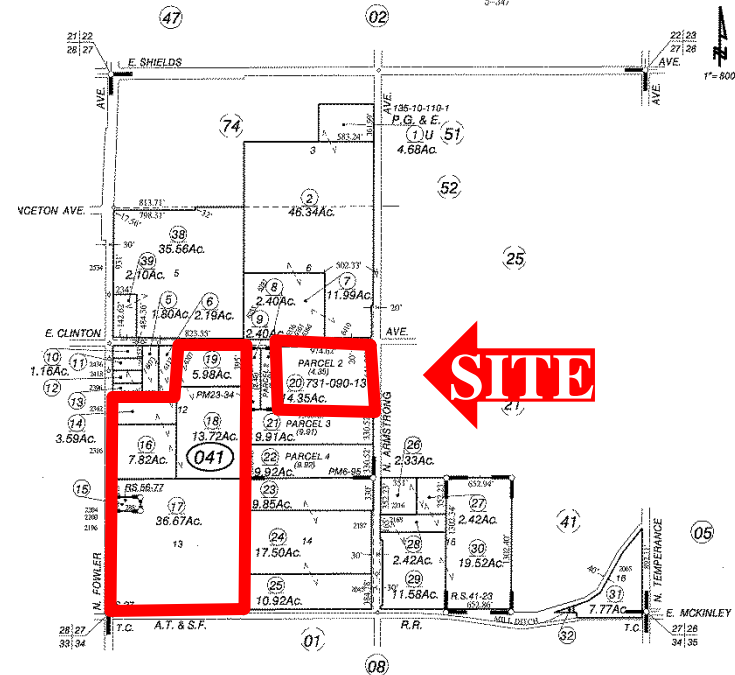
740 W. Alluvial Suite 102 | Fresno, CA 93711 | 559.448.1500

All projections, opinions, assumptions or estimates are supplied for example only, may not represent current or future performance of the property. Any and information pertaining to the location, demographics and the site plan is supplied by sources believed to be reliable. We do not guarantee the accuracy of information and make no warranty or representation thereto. All information is presented here with the possibility of errors, omissions, change of price, rental or other conditions, prior sale, lease or financing, or withdrawal without notice.

Property Description

RC Commercial is pleased to offer for sale +/-81 acres of Residential Development Land located at the southwest corner of Clinton and Armstrong.

- Purchase Price – \$135,000 per acre
- +/- 81 Acres
- APN#s – 310-041-14, 15, 16, 17, 18, 19, 20
- Located on the boarder of the Fresno City Limits
- Located within the Clovis Unified School District
- Just down the street from the new CUSD Elementary School set to open in 2016!
- Huge opportunity and priced to sell!
- 4 separate sellers
- Approximately 2,000 feet of frontage along Fowler Ave
- Sewer line is located along Fowler Ave



Derek Feramisco
derek@rccommercial.net
CaIBRE#01427540

740 W. Alluvial Suite 102 | Fresno, CA 93711 | 559.448.1500

All projections, opinions, assumptions or estimates are supplied for example only, may not represent current or future performance of the property. Any and information pertaining to the location, demographics and the site plan is supplied by sources believed to be reliable. We do not guarantee the accuracy of information and make no warranty or representation thereto. All information is presented here with the possibility of errors, omissions, change of price, rental or other conditions, prior sale, lease or financing, or withdrawal without notice.

**South of Clinton Between Fowler & Armstrong
Residential Development Land
Fresno, CA**

Exclusively Listed By

**DEREK FERAMISCO
740 W. Alluvial Suite 102
Fresno, CA 93711
559.448.1500
derek@rccommercial.net
CaIBRE#01427540**

